

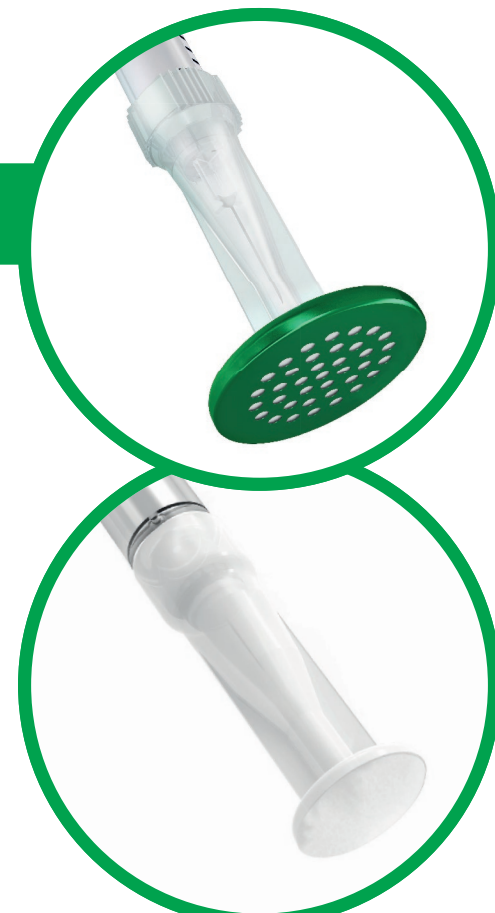
ELIMINATION OF PARTICLES, FUNGI AND BACTERIA

Size scale (1 mm = 1000 μm)

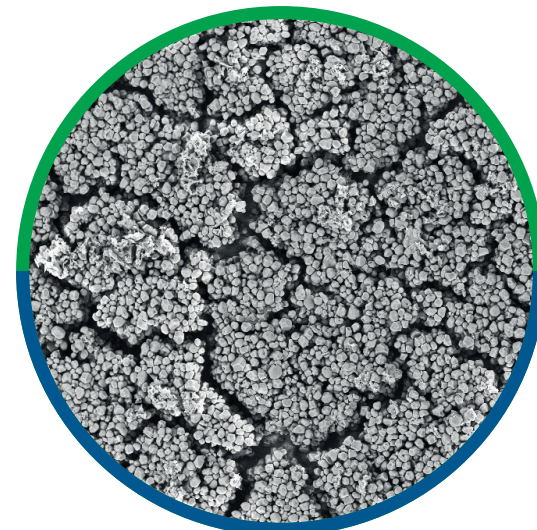
FILTRATION

FILTRATION

Sterifilt FAST
Sterifilt BASIC

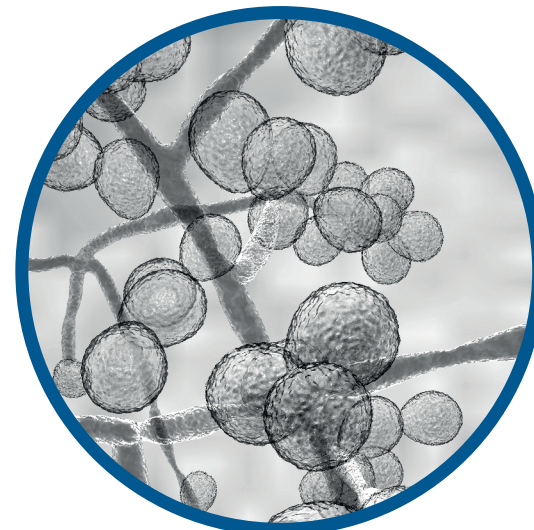


Insoluble particles
15 μm

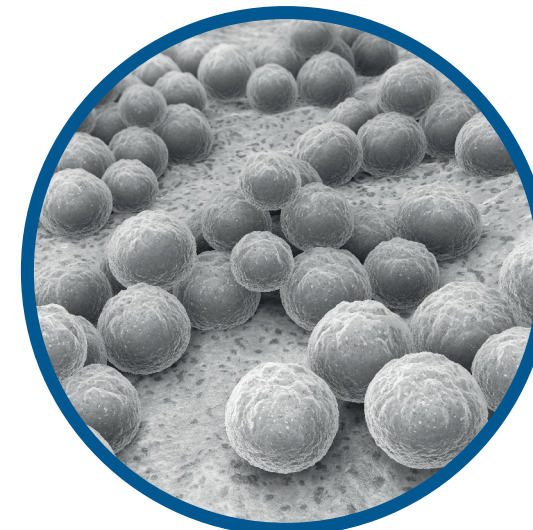


10 μm

Fungi (yeasts)
10 μm

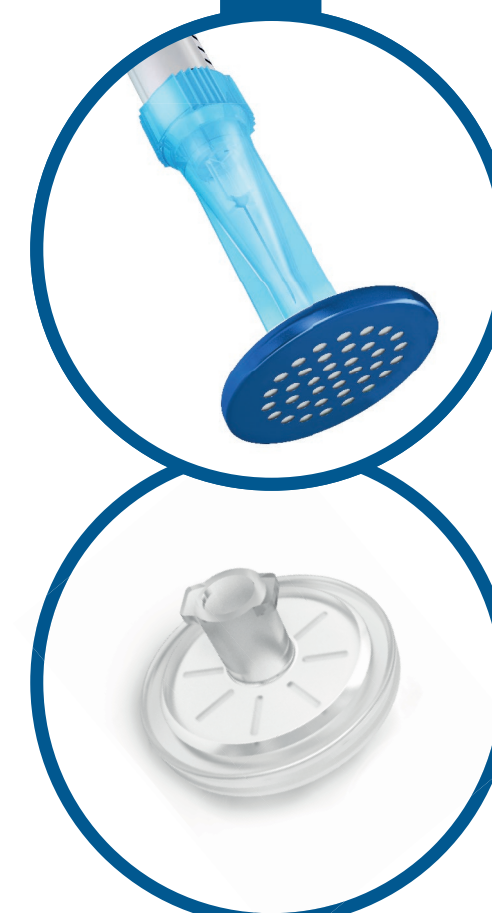


Bacteria
0.5 - 10 μm



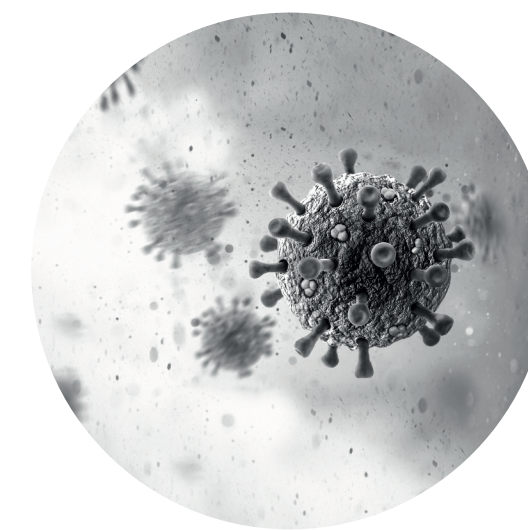
0.2 μm

Sterifilt \oplus
“Wheel” filter

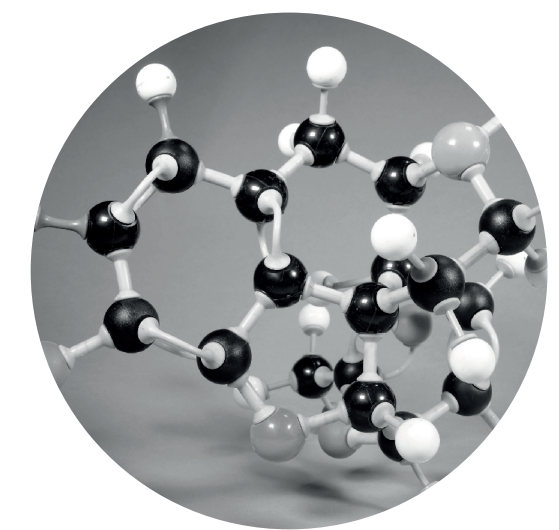


NON-FILTERED
ELEMENTS

Viruses (HIV, HCV)
0.05 - 0.15 μm



Molecules (cocaine, morphine...)
0.001 - 0.01 μm



To avoid viruses,
do not share tools.

Filtration does not
remove active product!

REDUCE RISKS!

- Use sterile and single use equipment
- Wash hands with soap and water or with an alcohol-based solution
- Disinfect the injection site with an alcohol swab (70%)
- Never lick the needle!